

SKIFHUNT



MONITORING + EMERGENCY COMMUNICATION



CONTROL THE TRAFFIC

Hunters or residents of settlements located in certain climatic conditions, who went hunting, fishing or on an extreme trip on snowmobiles, face certain problems on the way, face the nature and get caught in a snowstorm or snowmobile breaks down for various reasons and its further operation is no longer possible. They cannot be contacted and their location cannot be determined.

Employees of the regional search and rescue service go in search of the lost ones, and different search teams search for snowmobile drivers along with them. But without knowing the location of missing persons, rescuers may just not be in time to save them



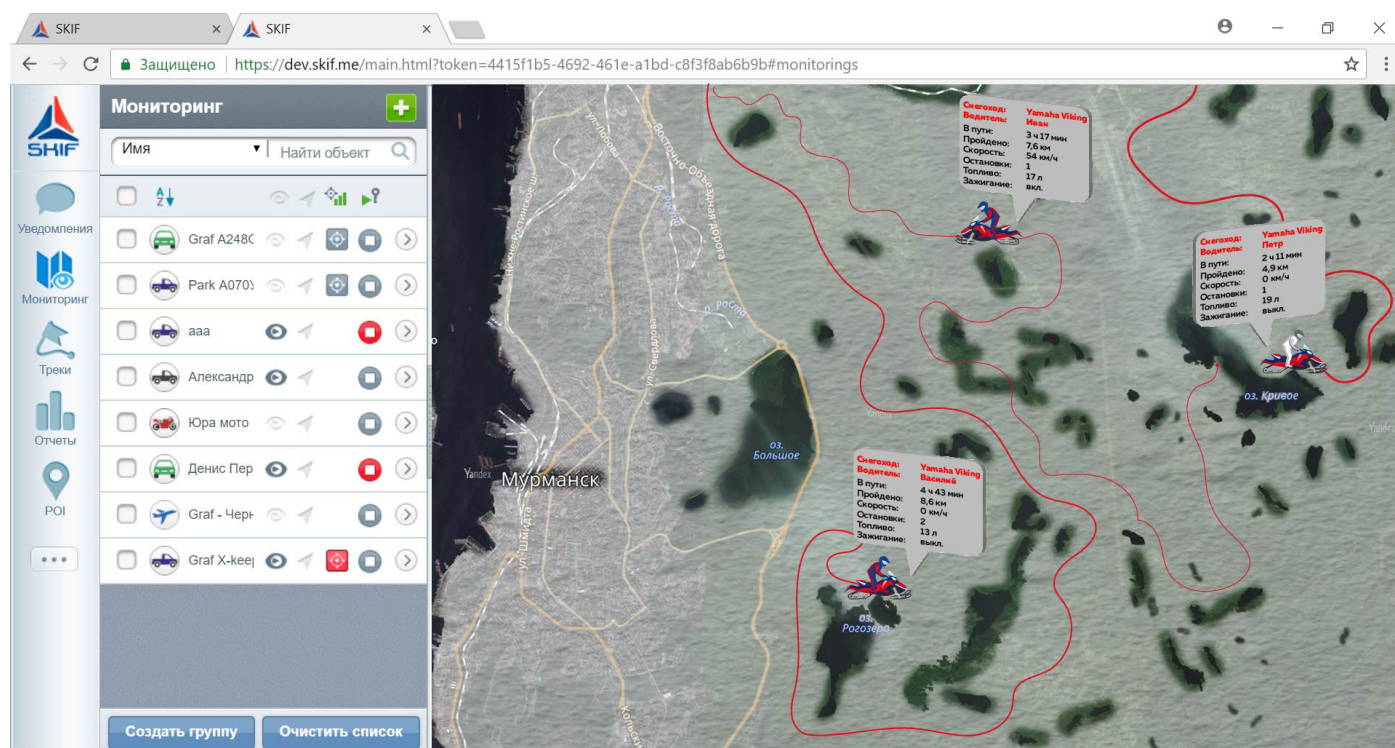
GPS/GLONASS TERMINAL

- MONITORING THE SNOWMOBILE STATE, CONTROLLING THE LOCATION AND MOVEMENT, AS WELL AS MILEAGE TRACKING TAKING INTO ACCOUNT THE TERRAIN RELIEF
- FUEL CONSUMPTION AND ITS LEVEL CONTROL BY CONNECTING PULSE, ANALOG AND DIGITAL SENSORS OR BY CALCULATING MILEAGE
- EMERGENCY REMOTE REPORTING ABOUT BREAKAGE OR OTHER EMERGENCY SITUATIONS
- COMMUNICATION BY TWO-WAY SPEAKER-PHONE OF THE DRIVER WITH A BASE
- DUAL SIM SUPPORT AND UP TO 32GB MICROSD CARD SUPPORT
- OPERATING WITH A BUILT-IN BATTERY UP TO 4 HOURS WORKING WITH CAMERAS AND A DISPLAY
- THE FUNCTION OF DETERMINING THE CURRENT LOCATION BY LBS DATA (BY THE LOCATION OF MOBILE OPERATOR TOWERS)



EMERGENCY COMMUNICATION

- ALARM BUTTON (PANIC BUTTON) IS DESIGNED TO ASSIST IN ALERTING IN EMERGENCY SITUATIONS (BREAKDOWN, ETC.) IN REAL-TIME TO CONTROL DESK , AND ALSO BY SENDING SMS OR NOTIFICATIONS TO E-MAIL
- GSM TERMINAL CAN BE CONFIGURED TO SEND AN ALARM SIGNAL NOT ONLY TO THE MONITORING CENTER, BUT ALSO TO THE LAW ENFORCEMENT AGENCIES DESK
- THE PTT SWITCH IS DESIGNED TO PROVIDE TWO-WAY VOICE COMMUNICATION BETWEEN THE BASE AND DRIVER OF THE SNOWMOBILE WITH THE MONITORING SYSTEM TERMINAL
- IN AN URGENT CASE WHEN IT IS NECESSARY TO COMMUNICATE THE INFORMATION ON THE LOCATION OF THE MONITORED OBJECT, THE DRIVER JUST PRESSES THE EMERGENCY BUTTON AND IT IS INSTANTLY DISPLAYED ON THE **SKIF** SOFTWARE SCREEN



ADVANTAGES

- TRACKING HUNTSMAN WORKING
- TIME LOCATION CONTROL
- FUEL AND LUBRICANTS
- CONSUMPTION RECORDING
- CONTINUOUS COMMUNICATION WITH THE DRIVER
- ROUTE MONITORING OF VISITING
- PARKING TIME
- EMERGENCY BUTTON
- TIME SPENT ON THE ROAD
- SPEED
- EXCLUSION OF PERFORMING UNAUTHORIZED
- ROUTES, NO «ADDITIONS» IN THE WAYBILLS



GPS/GLONASS/GSM terminal provides the determination the vehicle location and telemetry indicators (speed, route, parking lots, fuel level, «ignition», emergency two-way communication) and the transmission of this information to the processing server using GPRS channel. All data not transferred to the server is stored in non-volatile flash memory, which allows to use the terminal as a «Black box», with their data transferred to the server when the communication channel is recovered.



Russia, 119415, Moscow, Leninsky prospekt, 116, build. 1

Technical support (free calls for Russia)

8 (800) 222-02-75

for stationary phone numbers (Moscow)

8 (499) 431-70-00

for mobile phones (Megafon, Russia)

8 (925) 550-05-33

Technical support

zhminda@monitoring-plus.com

Administration

graf@monitoring-plus.com

Website::

www.monitoring-plus.ru

